



ASPHALT

Premix Plant

The background image shows an industrial facility, likely a recycling plant. In the foreground, there are large, horizontal metal rollers or drums, possibly for processing materials. A red truck is visible in the lower right corner, parked on a paved surface. A large white sign with the 'UEM EDGENTA' logo is prominently displayed on the right side of the image. The logo features the letters 'UEM' in blue above 'EDGENTA' in white on a blue background, with a circular emblem to the right. The overall scene is industrial and modern.

BACKGROUND

Edgenta PROPEL Berhad (EPB) rides on innovative technology by building a Hot Premix Plant with a Recycling Facility to produce Recycled Asphalt Pavement (RAP). The main purpose behind this initiative is to promote the use of sustainable product in the Infrastructure Industry. EPB has accumulated a substantial volume of milling waste from its work with PLUS, which will be recycled to produce RAP. By doing so, Edgenta aims to decrease reliance on virgin materials and embrace the principles of circularity within its business operations, in line with ESG (Environmental, Social, and Governance) concepts.

This project will mark one of the earliest recycling asphalt plants in Malaysia, and it is anticipated to yield various positive outcomes for the company and the environment.



ASPHALT

Premix Plant



ADVANTAGES

Carbon Control

Est. reduction 800 ton
CO₂-e saving, approx.
~50,000 trees
in a year

Quality Assurance

Proven and tested
pavement product from
our Pavement
Research Centre

Resource Sustainability

Conservation of raw
material i.e. aggregate
and bitumen

Circular Economy

Recycling of natural
resources to promote
circularity



PAVEMENT CIRCULAR ECONOMY



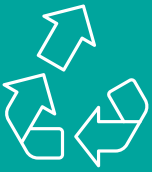
Sustainability & Circularity

Reuse of milling waste
to produce Recycled
Asphalt Pavement



ENVIRONMENTAL, SOCIAL, AND GOVERNANCE

ENVIRONMENTAL



Waste

Recycling, reuse & recovery of materials



Air & Water Quality

Lowering emissions / effluents that impact air & water quality



Material Use

Responsible use and reuse of natural resources



Co2 Emmision

Reduces & offsets emissions of greenhouse gases



Land Use

Reducing the need for landfills

SOCIAL



Community Engagement

Recycling, reuse & recovery of materials



Job Creation

Potential job creation for local communities and promote use of TVET skills

GOVERNANCE



Supply Chain Integrity

Fair sourcing of raw materials



Economic Impact

Catalyst business for other neighboring business to grow

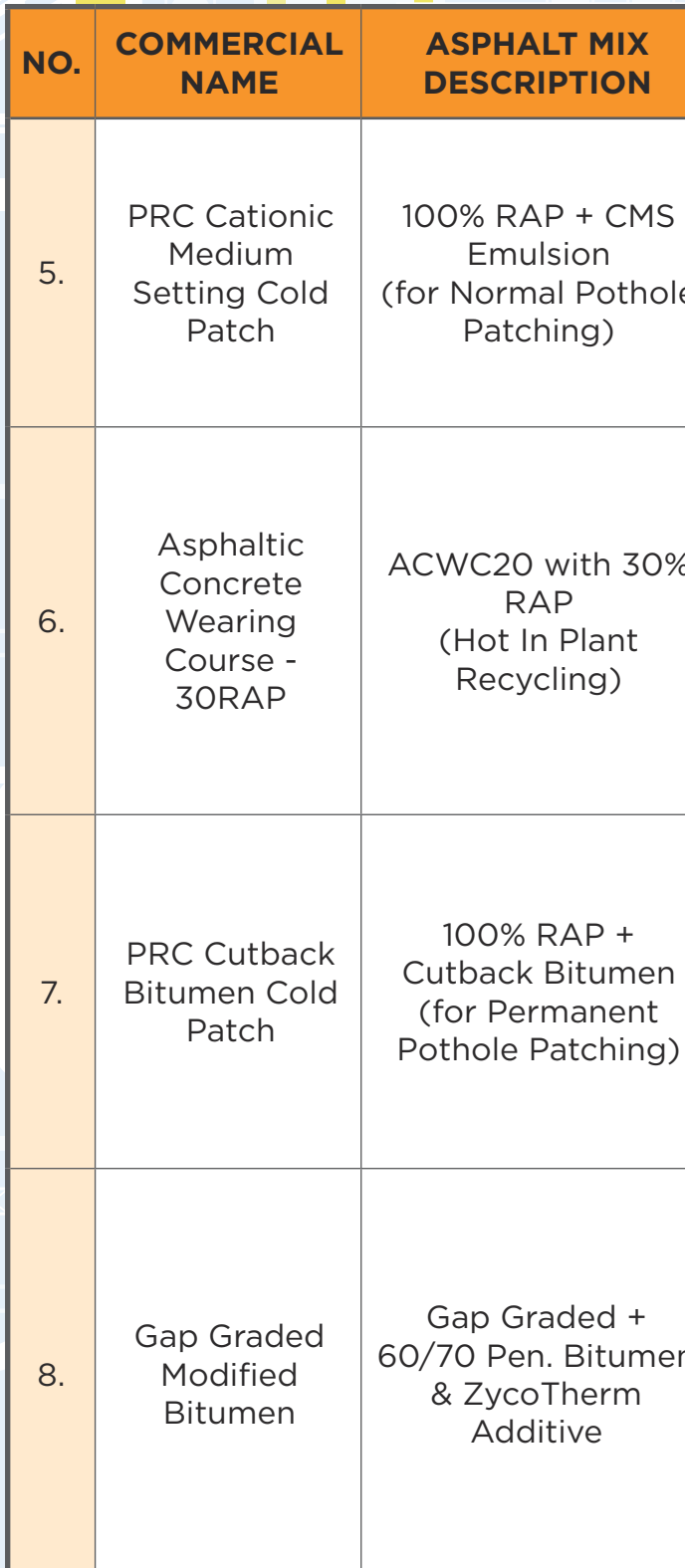
PLANT INFORMATION

PLANT CAPACITY	240 TPH (tonne per hour) and up to 30% RAP
PRODUCTS	<ul style="list-style-type: none"> • ACWC10, C14, ACWC20 @ ACBC20, ACBC28, BMR28, DBM40 can incorporate up to 60% RAP • Very Thin Overlay (VTO), Stone Mastic Asphalt (SMA), Gap Graded Asphalt (GGA), Open Graded Asphalt (OGA), Porous Asphalt (PA) • Crumb Rubber Modified Binder (CRMB), Stone Mastic Asphalt (SMA)
ADDRESS	Edgenta PROPEL Berhad Asphalt Premix Plant PT1586 (LOT 21118), Jalan Chenderiang, 35300 Batang Padang, Tapah, Perak Darul Ridzuan
EMAIL	premixplanttapah@edgenta.com



ASPHALT PRODUCTS

NO.	COMMERCIAL NAME	ASPHALT MIX DESCRIPTION	FUNCTION
1.	Asphaltic Concrete Binder Course - 30RAP	ACBC28 with 30% RAP (Hot In Plant Recycling)	<p>An economical and sustainable solution that utilizes 30% of Reclaimed Asphalt Pavement (RAP) to substitute virgin materials used in the production of the binder layer.</p> <p>It also uses Aramid and Polyolefin fibers homogeneously distributed within the mix to further improve the pavement performance and life cycle.</p>
2.	Asphaltic Concrete Binder Course - 30RAP	ACBC28 with 30% RAP (Hot In Plant Recycling)	<p>An economical and sustainable solution that utilize 30% of Reclaimed Asphalt Pavement (RAP) to substitute virgin materials used in the production of the binder layer resulting in a mix with at least comparable performance as conventional mixes.</p>
3.	Thin Overlay Mastic	PRC Grading + PG76 Bitumen	<p>A mix that utilizes specialized grading allowing the production and laying of a thin (30 mm) surfacing layer that provides structural and functional benefits to the pavement.</p>
4.	Asphaltic Concrete Wearing Course Modified Asphalt	ACWC20 Grading + Polymer Modified Bitumen Grandphalt (PMB-G) (with Idemitsu Kosan)	<p>An economical and sustainable solution that utilize 30% of Reclaimed Asphalt Pavement (RAP) to substitute virgin materials used in the production of the binder layer resulting in a mix with at least comparable performance as conventional mixes.</p>



NO.	COMMERCIAL NAME	ASPHALT MIX DESCRIPTION	FUNCTION
5.	PRC Cationic Medium Setting Cold Patch	100% RAP + CMS Emulsion (for Normal Pothole Patching)	A sustainable solution for temporary patching of defects on the pavement. It is fully produced from Reclaimed Asphalt Pavement (RAP) with no heating required during production or application.
6.	Asphaltic Concrete Wearing Course - 30RAP	ACWC20 with 30% RAP (Hot In Plant Recycling)	An economical and sustainable solution that utilizes 30% of Reclaimed Asphalt Pavement (RAP) to replace virgin materials used in the production of the surface layer resulting in a mix with at least comparable performance as conventional mixes.
7.	PRC Cutback Bitumen Cold Patch	100% RAP + Cutback Bitumen (for Permanent Pothole Patching)	A high-performance sustainable solution for patching defects on the pavement. It is fully produced from Reclaimed Asphalt Pavement (RAP) with heating required only during heating of Cutback Bitumen to ensure sufficient workability during production or application.
8.	Gap Graded Modified Bitumen	Gap Graded + 60/70 Pen. Bitumen & ZycTherm Additive	An economical and sustainable solution that utilize 30% of Reclaimed Asphalt Pavement (RAP) to substitute virgin materials used in the production of the binder layer resulting in a mix with at least comparable performance as conventional mixes.

ASPHALT PRODUCTS

NO.	COMMERCIAL NAME	ASPHALT MIX DESCRIPTION	FUNCTION
9.	Porous Asphalt (CRMB)	Porous Asphalt - Crumb Rubber Modified Bitumen (Preblended CRMB by K2 Bitumen Company)	An open-graded mix with a high percentage of air voids which allows water to pass through the pavement to improve safety during rainy day. It also incorporates recycled crumb rubber as modifier to enhance the pavement performance.
10.	Asphaltic Concrete Wearing Course - 30RAP +SFM	ACWC20 with 30% RAP + Super Fibre Mix (SFM)	<p>An economical and sustainable solution that utilizes 30% of Reclaimed Asphalt Pavement (RAP) to substitute virgin materials used in the production of the surface layer.</p> <p>It also uses Aramid and Polyolefin fibers homogeneously distributed within the mix to further improve the pavement performance and life cycle.</p>
11.	Asphaltic Concrete Binder Course - 50RAP	ACBC28 with 50% RAP (Hot In Plant Recycling)	An economical and sustainable solution that utilizes 50% of Reclaimed Asphalt Pavement (RAP) to substitute virgin materials used in the production of the binder layer. With RAP content greater than 30%, via rejuvenating agent is required to restore the chemical properties of RAP aged bitumen.



ASPHALT

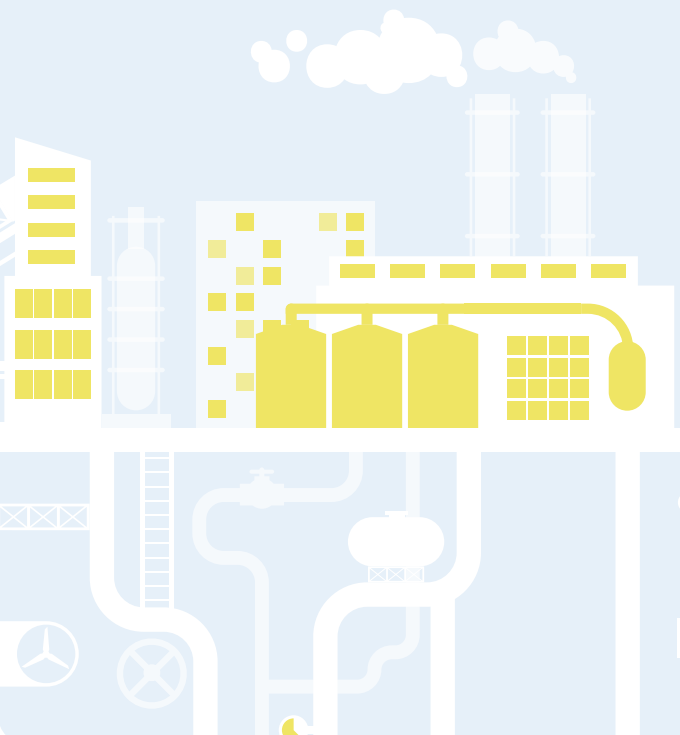
Premix Plant

FOR MORE INFO, contact us at:

**Edgenta PROPEL Berhad
Asphalt Premix Plant**

PT1586 (LOT 21118),
Jalan Chenderiang,
35300 Batang Padang,
Tapah, Perak Darul Ridzuan

Email:
premixplanttapah@edgenta.com





ASPHALT

Premix Plant

UEM Edgenta Berhad 196301000166 (5067-M)
Level 17, Menara UEM,
Tower 1, Avenue 7,
The Horizon, Bangsar South City,
No. 8, Jalan Kerinchi, 59200 Kuala Lumpur.

Tel: +603 2725 6688
Fax: +603 2725 6888
Web: uemedgenta.com